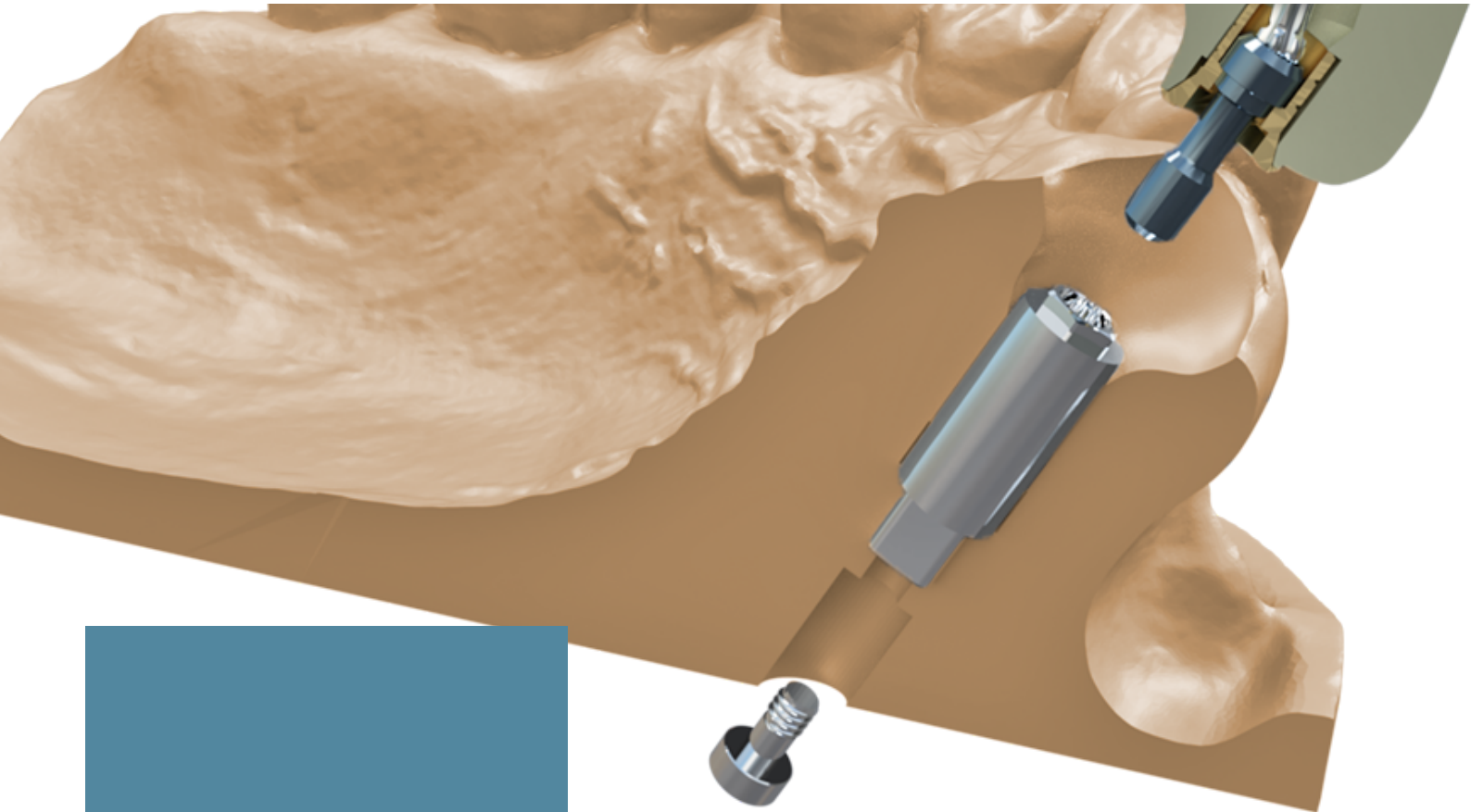


# ANALOGS FOR INTRAORAL MODELS

GEMINI LINE



IN THIS  
PAMPHLET

CHARACTERISTICS

ADVANTAGES



EN

## THIS IS WHAT YOU CAN DO WITH US



think about yourself!

New Ancorvis has developed a line of laboratory analogs specifically dedicated to applications derived from intraoral scanning.

Designed for **easy** use during **insertion and fixing**, they guarantee **highly accurate repositioning on models**, obtained using 3D printing technology thanks to their cylindrical shape with polygonal base.

Thanks to the bottom retention system with threaded screw, **they can be reused** on multiple clinical cases, given the analog no longer needs to be bonded to the model.

Finally, the **compatibility** on this type of analog with **New Ancorvis intra oral libraries** means they can also be used with your own models produced In House with 3d Printing!