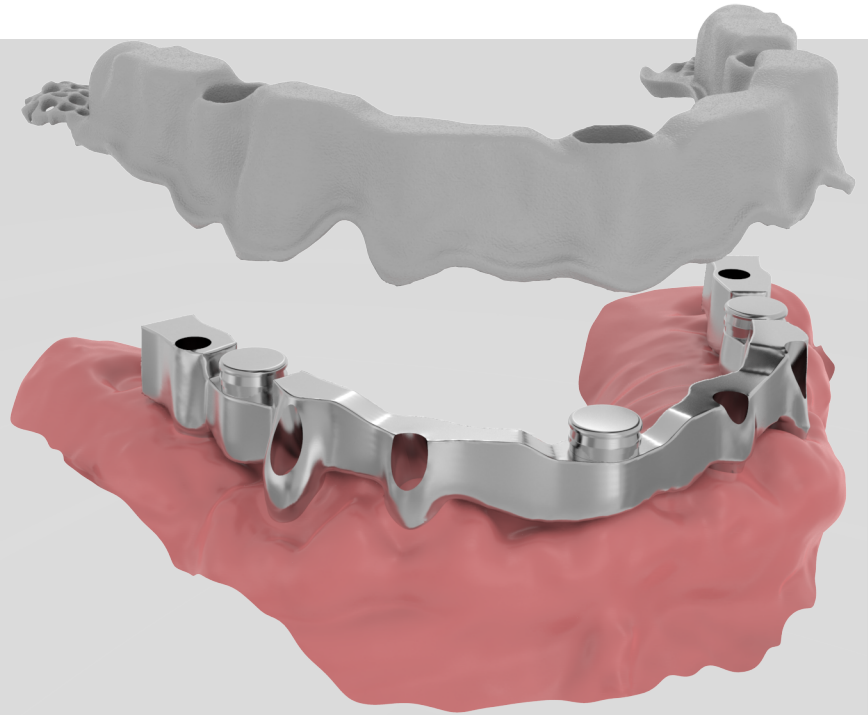


DUO LINE

PRIMARY AND SECONDARY STRUCTURES

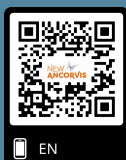


IN THIS
PAMPHLET

THE DUO SYSTEM

THE MATERIALS

ADVANTAGES



THIS IS WHAT YOU CAN DO WITH US

NEW ANCORVIS think about yourself!

When two complementary products (both with connections or that can potentially have connections) work in synergy to create removable devices in an implant-supported prosthesis, we are talking about DUO.

Duo is, in all respects, a system where the undisputed protagonists are:

***Primary bar screw-retained on implants**, obtained by **milling** (made of grade 5 **Titanium** or **Cobalt-Chrome** alloy)

***Secondary structure** obtained using additive production techniques, both in the **M version** (SLM made of grade 5 **Titanium** or **Cobalt-Chrome** alloy not machine milled), and in the **M2 version** (SLM and machine milled).

DUO LINE

A TIME-SAVING SOLUTION AT THE RIGHT PRICE

Advantages:

- The double file (primary and secondary) comes from a single design flow.
- Maximum precision assembly between the parts.
- Coupling tolerances between primary and secondary manageable during the CAN phase.
- Repeatability of the result.
- Drastic reduction in production times compared to the traditional flow.
- A high-end solution at the right price.

